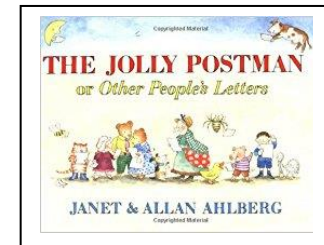




# The Jolly Postman

## Year 1 Homework

## Spring Term 2018



### Welcome to your Spring Term Homework.

This topic will last for a term. We hope you enjoy the tasks and look forward to sharing your children's work with the class. These are only ideas. We will share all work that the children bring in from home. Obviously sometimes there are days when we have more time than others so please do not expect your child to have shown it on the day it comes in.

**Possible Homework dates : 15.1.18, 29.1.18, 20.2.18, 5.3.18 and 26.3.18.**

1

#### Let us know

Tell us about an animal that lives in the forest or wood.

2

#### Make us smile

Take a picture of a place an elf or a fairy could live. How do you know they live there?



3

#### Can you find out?

Look at a world map and find a country you have never heard of and find 3 facts about it.

4

#### Make it

Design a Fairy Door!

Can you use natural materials?

Are there any 2D or 3D shapes on your door?

5

#### Investigate

How many doors and windows are in your house? How could you record this? Perhaps you could use a tally chart.

6

#### Grow something

It could be a bulb or something from seed. Look at how it grows. What changes do you notice? Perhaps you could take some photos.